

A.P.P.L.E.



Annual Report
Jan – Dec 2016



Chair's Report

Welcome to A.P.P.L.E's 2016 Annual Report.

A.P.P.L.E has experienced some big changes over the past 2 years but the organisation is imaginative and flexible and has adapted. A.P.P.L.E continues to promote our core values that run through all the projects.

The Next Step A core concept at A.P.P.L.E., the Next Step is an integral part of our approach within all of our activities.

The Next Step encompasses how we act towards each other and how we see our responsibilities to each other. We acknowledge that we can't solve everyone's problems and that each individual's situation and challenges are often complex and sometimes overwhelming.

We help our user group to make progress by helping them to focus on the next task in front of them. This brings immediacy to our work which both gives a sense of achievement and equips users with a transferable practical approach, a path forward. It applies to us all: staff, children, young people, families and friends as we encourage each other at every stage to take the NEXT STEP.



We are all in it together

No one is outside of what happens at A.P.P.L.E.. Everyone is involved in thinking about how to make it better. The programme is constantly evolving. New activities, new places to visit, new art to make, new food to cook and eat. The solidity and dependability of what we do is taken for granted by the young people, as it should be. This security allows them to step out and grow in confidence and ability. It is the balance between a safe home base and challenging activities that gives dynamism to the projects and provides growth for the individuals.

"I can always tell which young people have been to APPLE because they are so open-minded. They will try all activities and foods, and understand the importance of difference. APPLE provides them with an opportunity to experiment with art, food, friendships and sports in a tolerant and non-judgemental environment. The effect that this has on the young people is both striking and inspiring." Colin Brent- LBE Youth and Connexions

Experience it – Learn it - Share it

Experience it – Learn it - Share it has always been at the heart of A.P.P.L.E. right from the start; to get children and young people active, involved and taking responsibility for their time and well being.

Experience it: A.P.P.L.E. is lively and encourages children and young people to jump in and try new things- new foods (chocolate beetroot cake), new sport (croquet) new experiences (wall climbing, the theatre)

Learn it : learn to be courageous, to face a challenge, to feel the sense of accomplishment, to feel knowledge and experience grow.

Share it: pass it on by encouraging others to challenge themselves, try the unknown, to be brave. Teach the skills learnt. Give back.

Shared Space Shared Values

A.P.P.L.E is located in an area of high cultural diversity. There is often a lack of knowledge and fear and distrust between communities. Communities are often polarised and segregated, living parallel lives. This cultural diversity is constantly in a state of flux, with newcomers from different backgrounds constantly joining the mix. We put on events that promote commonality and shared experiences that develop understanding, trust and respect.

At present A.P.P.L.E. runs :

<i>Monday</i>	After School Tea – a casual, drop in session
<i>Tuesday</i>	Tuesday Club is predominantly art but with cooking and some sport- it is casual, drop-in and youth directed
<i>Wednesday</i>	John Perryn Art Club
<i>Alternate Thursdays</i>	Cooking club /Gardening Club
<i>Fridays</i>	games, movie or dinner club
<i>Sat and holidays:</i>	We do everything. Good old fashioned drop-in – mixed age and multi activity- the heart of what we do



This summer was very busy, helped by the good weather and a very full and exciting programme. The staff were on top form and the children and young people were imaginative, active, and had lots of fun. It was an active, sporty summer with everyone outside enjoying the sun. There were 3 end-of-the-day water fights, which is always the sign of a good summer.

There were a lot of new, younger children this summer coming from our term time clubs. Many of our regulars are going to high school this September and we are anticipating new members joining as our regular group introduce their new friends to A.P.P.L.E.

As always in amongst the activities we are involved in supporting the young people that are facing difficulties in their lives. This summer saw several young people and families find support and friendship at the ART BLOCK. A.P.P.L.E continues its core ethos of supporting each other and providing a safe and nurturing place for young people to be.

We continue to promote the habit of A.P.P.L.E. – **be active, have fun, look after yourself and look after others.** Everyone was enthusiastic, energetic and involved.

Summary

The reorganisation is still going on and there are issues that have to be looked at and resolved. (see the new structure and general report pages)
We need to continue to support and identify how we can improve and strengthen what we do best. That is to provide an informal, participant led, extended family, socially mixed, multi activity, drop in centre.

Deborah Catesby, Chair



SPORT



1. Football
2. Rowing
3. Skateboard Crew
4. Tug-of-war
5. Yoga

YOUTH



1. Healthy Food Demonstration Day
2. Youth Helper restoring a bench
3. Youth helper teaching cooking
4. Young People at Event Management Training

EVENTS



1 and 2. Acton Carnival 3. Salad Day
4. Picnic at Battersea Park and triking 5. Halloween pumpkins

FOOD FOR THOUGHT



1. Healthy salad
4. Enchiladas

2. Stir fry
5. Pizza

3. Pizza dough making
6. Halloween teeth

GARDENING



1. Thyme and chives
2. Picking potatoes
3. Visit to Kew Gardens
4. Soft fruit
5. Tending the strawberries
6. More strawberries

ART



1. Cardboard sculpture

2. Chameleon

3. Mural Project with John Perryn

4. Robot heads

5. Tile project

General Report

The overall strategy continues to be to make A.P.P.L.E into a robust and sustainable organisation that continues working with children and young people to improve their life chances.

The long term strategy is for A.P.P.L.E. to be less founder led and for the Project Coordinator's role to reduce over the next 5 years.

Where we are now

The restructured set up has been running for year. It seems to have settled down in its present form and all the activities, events and clubs are going well. The financial situation, as always, is the most pressing and affects how and what we can run. A.P.P.L.E has come to the end of the Tudor Trust grant and next December will come to the end of the Big Lottery Fund. This year there is no dedicated funding for John Perryn Art club.

Financially from January until July next year funding will be very tight. The priority is to keep the doors open to the young people. This means ensuring we have on-site staff working directly with the children and young people. We also have to ensure that we have the data and admin to provide our funders with the outcomes required as part of our grant agreements.

There has been some reassigning of funding within our grant specs and part of this has meant reducing the number of arts administration sessions. Sharon Walter, who held this role, has decided that she would rather concentrate on her own arts practice and stay with A.P.P.L.E on a freelance project basis. She is also to become a trustee. This is very good news for A.P.P.L.E. as her dedication and expertise is valued.

The financial situation is linked to the structure of the organisation. John Lyons Charity is a long time supporter of A.P.P.L.E and keen to continue to help. All funding organisations need assurance that the governance of A.P.P.L.E is strong and secure.

Julia Kaufman, Business Consultant, was asked by John Lyons Charity to come and assist A.P.P.L.E with a business plan and to give her assessment of the running of A.P.P.L.E. She raised a number of issues.

She was concerned that too much of the management fell to the Project Coordinator and that with so many session workers, it was important to have an anchor; a lead; someone on-site to co-ordinate things; for example, to ensure that the required policies are in place and up to date and to take care of such things as health and safety.

At the recent AGM, the committee and supporters discussed the issues raised by Julia Kaufman. Issues such as health and safety procedures and updating policies are already in place. Other issues, such as an on-site lead person has now been addressed. (See the new staffing structure on page) Other points raised we can only deal with if and when we raise more grant funding, for example, taking an on- site training administrator.

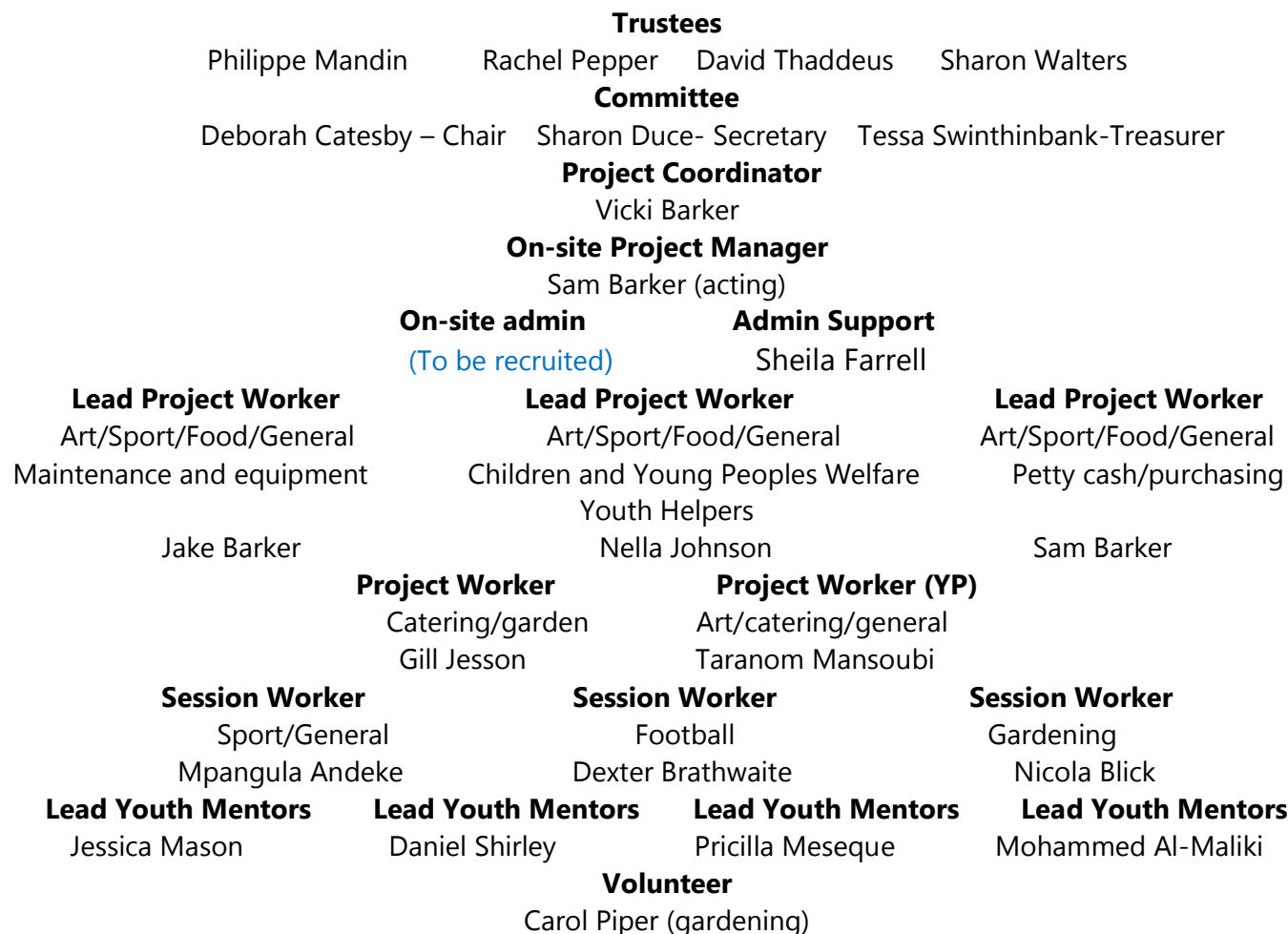
While the Project Coordinator (*Vicki Barker*) continues to be responsible for a great deal of the administration there has been a continuous devolvement of admin tasks to other members of staff. Sheila Farrell as part-time admin support, has taken on some work as administrative assistant to help with the reporting and monitoring.

Over the next 2 years the aim is to have devolved most of the administration of A.P.P.L.E. from the Project Coordinator through a restructured set up with specific staff admin roles.

A.P.P.L.E. COMMITTEE AND TRUSTEES

A.P.P.L.E. is a registered constituted charity with a Management Committee of Chair, Treasurer and Secretary and four trustees. There is a core support group of 10+. A.P.P.L.E has a large group of volunteers ranging from regulars, to those who come and help out on specific projects, for example carnivals. This year we have a new trustee, Sharon Walters, artist and arts administrator.

Who we are



FUNDING ORGANISATIONS

LB Ealing Youth and Connexions ~ Leathersellers Company~ Big Lottery Fund Reaching Communities ~ Tudor Trust ~ John Lyons Charity
~ Awards For All ~ St James Place ~Garfield Weston~

CONTACT GROUPS

Churchfield Community Association ~ John Perryn Primary School ~ Horsenden Primary School ~East Acton Primary School~ Acton
Community Forum ~ Artification~ Acton High School ~Gunnersbury Park and Museum~ Acton Gardening Association ~ LB Ealing: Parks,
Environment, Children's Services, Youth & Connexions ~

A.P.P.L.E's Annual Accounts

April 1st 2015 – 31st March 2016

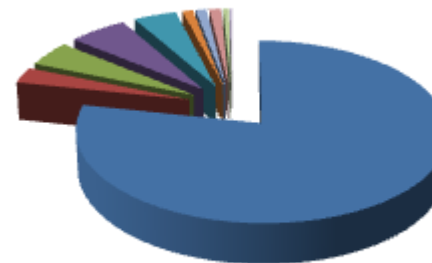
Clarke and Co, Acorn House 33, Churchfield Road, Acton, W3 6AY

INCOME : £152,820



- Donations -£1,019
- Big Lottery Grant-£39,597
- Grants- £94,318
- Commissioned projects- £17,845
- Interest- £41

EXPENDITURE: £154,193



- Wages and fees-£120,718
- Rent and storage-£7,164
- Refreshments-£6,564
- Transport-£1,653
- Insurance-£867
- Accountancy and payroll-£4,485
- Materials and equipment-£9,007
- Utilities-£1,609
- Office costs-£1,772
- Sundry costs-£354

Grants

Big Lottery Fund Reaching Communities awarded £39,597



A.P.P.L.E.

Vicki Barker
Projects Coordinator
2, Forbury Chase
Sherford Street
Bromyard
Herefordshire
HR7 4DL

Sam Barker
On Site Project Manager (acting)
The ART BLOCK
Acton Park
East Acton Lane
Acton
London
W37LJ

Tel: 01885 799064 or 07790367799
E-mail: vicki_appleplay@btconnect.com
www.apple-play.com